



Notice to Mariners No 22 / 2017

Blyth Offshore Demonstrator Project

26th August 2017

BOD-101-04-SMC-NTM-00040-A-01

Construction Update

Latest Update to NTM 21 (additional information)

- MCS Coromell CTV being replaced by the MCS Kaver for the offshore cable activities , vessel details below:

Vessel name	MCS Kaver, crew transfer vessel
Owner/Operator	Maritime Craft Services
IMO No.	9694165
Call sign	2GMB8
Vessel Master	Ben Woods

- Wet storage of 4 anchors

4 Anchors will be stored at sea in the following locations:

Anchor 1 55-09-100N 001-25-000W

Anchor 2 55-09-100N 001-25-100W

These positions will be marked by yellow cans and have flashing lights.

- Pull out of the winch wire from the beach at Cambois

The vessel *Torsten* will pull out the winch wire from the beach location at Cambois to approx. 530m from the shore where the cable laying vessel *Ndurance* will hook up. Vessels will be operating within the designated cable route and installation will move (East to West) from cambois Beach to GBF 6.

BOD-101-04-SMC-NTM-00040-A-01



Notice to Mariners No 22 / 2017

Blyth Offshore Demonstrator Project

26th August 2017

BOD-101-04-SMC-NTM-00040-A-01

Please note - All mariners are requested to maintain a minimum 500m safety zone around each turbine location indicated in Chart 1 and Table 1 and remain outside the site area.

Chart 1 - Array 2 Site and Turbine/GBF Locations

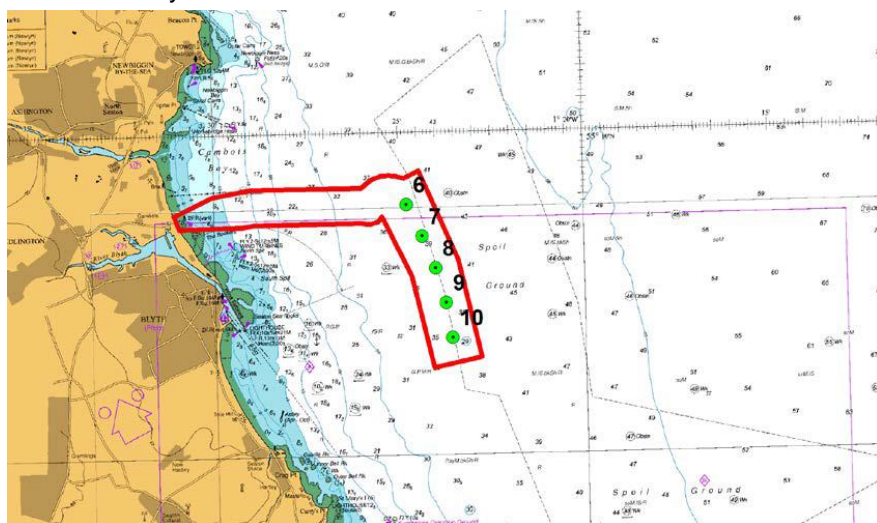


Table 1 - Turbine Placement Locations

Location	Position	
GBF Location 6	N55°08.8702'	W001°24.7913'
GBF Location 7	N55°08.3793'	W001°24.3781'
GBF Location 8	N55°07.8805'	W001°24.0344'
GBF Location 9	N55°07.3406'	W001°23.7706'
GBF Location 10	N55°06.7974'	W001°23.6067'

Fisheries Liaison Contact

Specialist Marine Consultants is the appointed Fisheries Liaison Coordinator and can be contacted as follows:

Simon Prince – Fisheries Liaison Co-ordinator
Specialist Marine Consultants Ltd
+44 (0) 7920 273866
Email: simonp@smchse.com

John Armstrong- Fishing Industry Representative
Specialist Marine Consultants Ltd
+44 (0) 7498 318694
Email: smcflo@smchse.com

BOD-101-04-SMC-NTM-00040-A-01