



Notice to Mariners No 26 / 2017

Blyth Offshore Demonstrator Project

30th September 2017

BOD-101-04-SMC-NTM-00044-A-01

Construction Update

Gravity Base Foundations (GBFs), Cable Burial, Wind Turbine Generator Installation & Commissioning

Please be advised of the following activities proposed to be undertaken at the Blyth Offshore Demonstrator (BOD) Project.

Please note - All mariners are requested to maintain a minimum 500m safety zone around each turbine location indicated in Chart 1 and Table 1.

Chart 1 - Array 2 Site and Turbine/GBF Locations

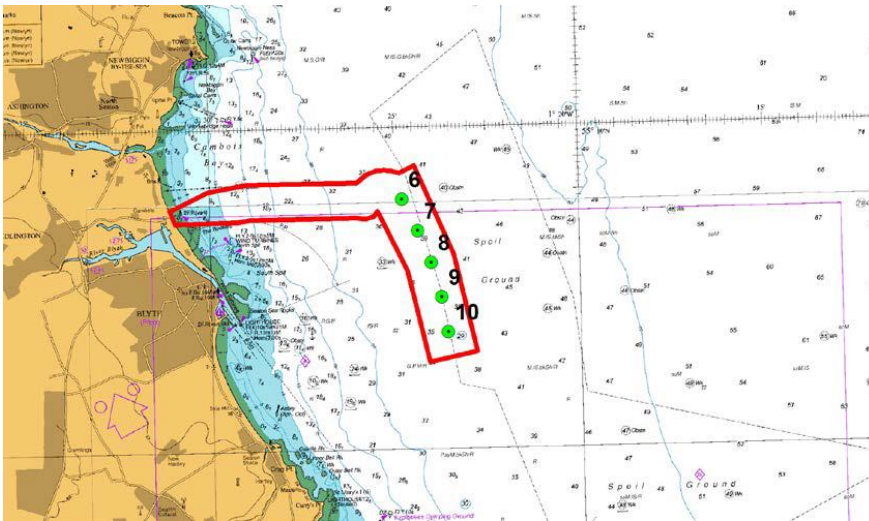


Table 1 - Turbine Placement Locations

Location	Position	
GBF Location 6	N55°08.8702'	W001°24.7913'
GBF Location 7	N55°08.3793'	W001°24.3781'
GBF Location 8	N55°07.8805'	W001°24.0344'
GBF Location 9	N55°07.3406'	W001°23.7706'
GBF Location 10	N55°06.7974'	W001°23.6067'

Activity 1: GBF Post-installation Works & Commissioning

Please be advised that GBF post-installation works will be continuing on the BOD Project Array 2 site.

BOD-101-04-SMC-NTM-00044-A-01

Notice to Mariners No 26 / 2017

Blyth Offshore Demonstrator Project

30th September 2017

BOD-101-04-SMC-NTM-00044-A-01

All five GBFs are now installed and ballasted but regular vessel trips are still ongoing for the immediate period in order to undertake small-scale works.

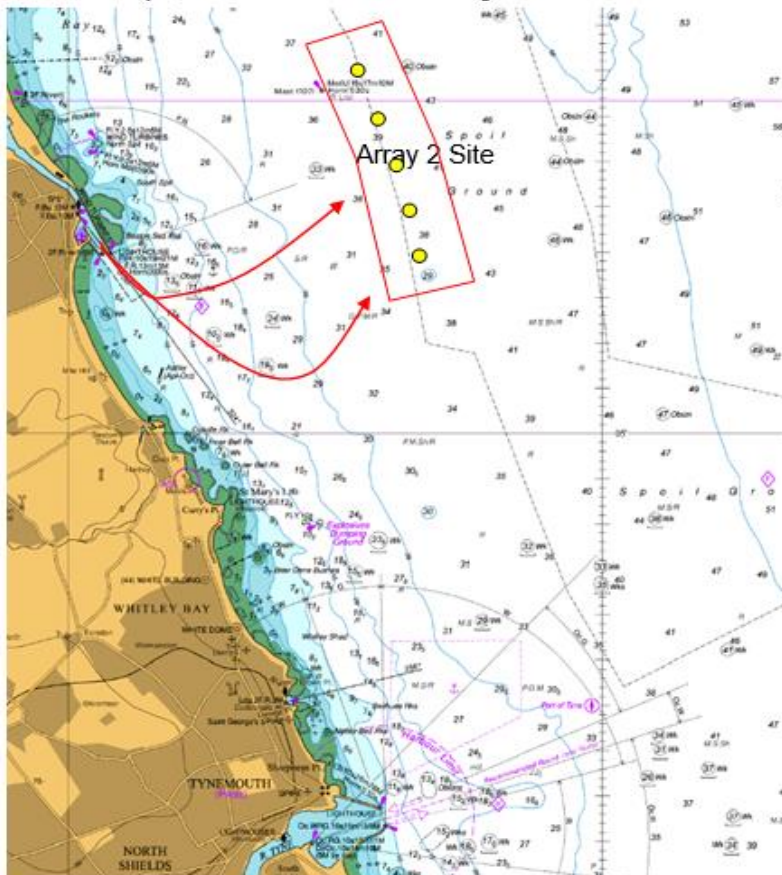
Regular trips will also be made to the foundations and wind turbine generators for project commissioning

The vessels request a 500m safety zone and can be contacted on VHF 16 when on location.

Transit Routes

Chart 2 details the indicative transit routes for vessels operations from Port of Blyth. Vessels will use the shortest navigable route from the port to the site, making best efforts to avoid any conflicts with inshore fishing activity.

Chart 2 - Array 2, with indication of main navigation routes to site.





Notice to Mariners No 26 / 2017

Blyth Offshore Demonstrator Project

30th September 2017

BOD-101-04-SMC-NTM-00044-A-01

Vessel Details for Activity 1

Vessel name	MPI Rucio, crew transfer vessel
Call sign	2CVW7
Vessel Master	Gordon Connor

Vessel name	Ginny Louise, crew transfer vessel
Operator	Tidal Transit Ltd
IMO Number	918392
Call Sign	2FCV4
Vessel Master	Duggie Summers

Activity 2 – Export and Array Cable Laying and Burial

The export cable from the shore end near Cambois to GBF Location 6 has been laid and buried. The inter-array cable from GBF Location 6 through to GBF Location 10 has been laid however burial is not scheduled to take place to on or around 5th October.

The *MCS Kaver* (crew transfer vessel) will be making regular trips from the Port of Blyth to the Array 2 site to undertake works on the inter-array cable.

The *Grand Canyon* (offshore construction vessel) will arrive at the Array 2 site on or around 5th October to bury the inter-array cable, with operations scheduled to last until on or around 10th October. These dates are subject to weather.

A 500m safety zone around the vessels is requested at all times and the vessels can be contacted on VHF 16 when on location. As the inter-array cable has not been buried between GBF Locations 6 – 10 it is requested that a **500m safety zone is maintained at all times from the GBF Locations**. Transiting through the site should be undertaken with caution, maintaining the safety zone distance from the GBFs and any project vessels.

Vessel Details for Activity 2

Vessel name	MCS Kaver, crew transfer vessel
Owner/Operator	Maritime Craft Services
IMO No.	9694165
Call sign	2GMB8
Vessel Master	Ben Woods

BOD-101-04-SMC-NTM-00044-A-01

Notice to Mariners No 26 / 2017

Blyth Offshore Demonstrator Project

30th September 2017



BOD-101-04-SMC-NTM-00044-A-01

Vessel name	Grand Canyon, offshore construction vessel
Owner/Operator	Volstad Construction AS / Volstad Management AS
IMO No.	9614608
Call sign	3EVR8
Vessel Master	Jan E Nakken

Activity 3 – Wind Turbine Generator (WTG) Installation

The major components for all five WTGs have been installed and regular vessel trips are being undertaken to the WTGs to complete the installation process.

The *Wind Transfer* and the *Challenger* crew transfer vessels will operate from the Port of Blyth and utilise similar transit routes illustrated in Chart 2.

A **500m safety zone** around the vessels is requested at all times and they can be contacted on VHF 16 when on location.

Vessel Details for Activity 3

Vessel name	Wind Transfer, crew transfer vessel
Owner/Operator	North Sea Logistics
IMO No.	N/A
Call sign	2EAL9
Vessel Master	Ian Hughes

Vessel name	Challenger, crew transfer vessel
Owner/Operator	North Sea Logistics
IMO No.	N/A
Call sign	21XX4
Vessel Master	Rob Hughes

Fisheries Liaison Contact

Specialist Marine Consultants is the appointed Fisheries Liaison Coordinator and can be contacted as follows:

Simon Prince – Fisheries Liaison Co-ordinator
Specialist Marine Consultants Ltd
+44 (0) 7920 273866
Email: simonp@smchse.com

John Armstrong- Fishing Industry Representative
Specialist Marine Consultants Ltd
+44 (0) 7498 318694
Email: smcflo@smchse.com

BOD-101-04-SMC-NTM-00044-A-01