



## **Notice to Marine Users 2018 Blyth Offshore Demonstrator Wind Farm**

**11<sup>th</sup> September 2018**

### **Important Notice to All Marine Users**

#### **Post Construction Fish/Shellfish & Trawl Surveys**

Natural Power will be conducting an epibenthic beam trawl survey at the Blyth Offshore Demonstrator wind farm. The survey is proposed to commence on 14<sup>th</sup> September 2018 and will be completed by 14<sup>th</sup> September (duration 1 day). The survey time may vary due to weather conditions as a calm sea state is required. The vessel undertaking these surveys will be the 'Princess Royal'.

Survey details:

#### **Epibenthic Beam Trawl Survey**

- A 2 m steel ('Jennings') beam trawl with a 5 mm mesh cod-end will be deployed at the 6 sampling stations. At each sampling station the net will be towed for a distance of 800 m at a speed of 1-1.5 knots (approx.)
- Fig 1 shows a chart of the survey area.
- Fig 2 displays a chart setting out the survey area (degrees and decimal minutes)

# Notice to Marine Users 2018

## Blyth Offshore Demonstrator Wind Farm

11<sup>th</sup> September 2018

Fig 1

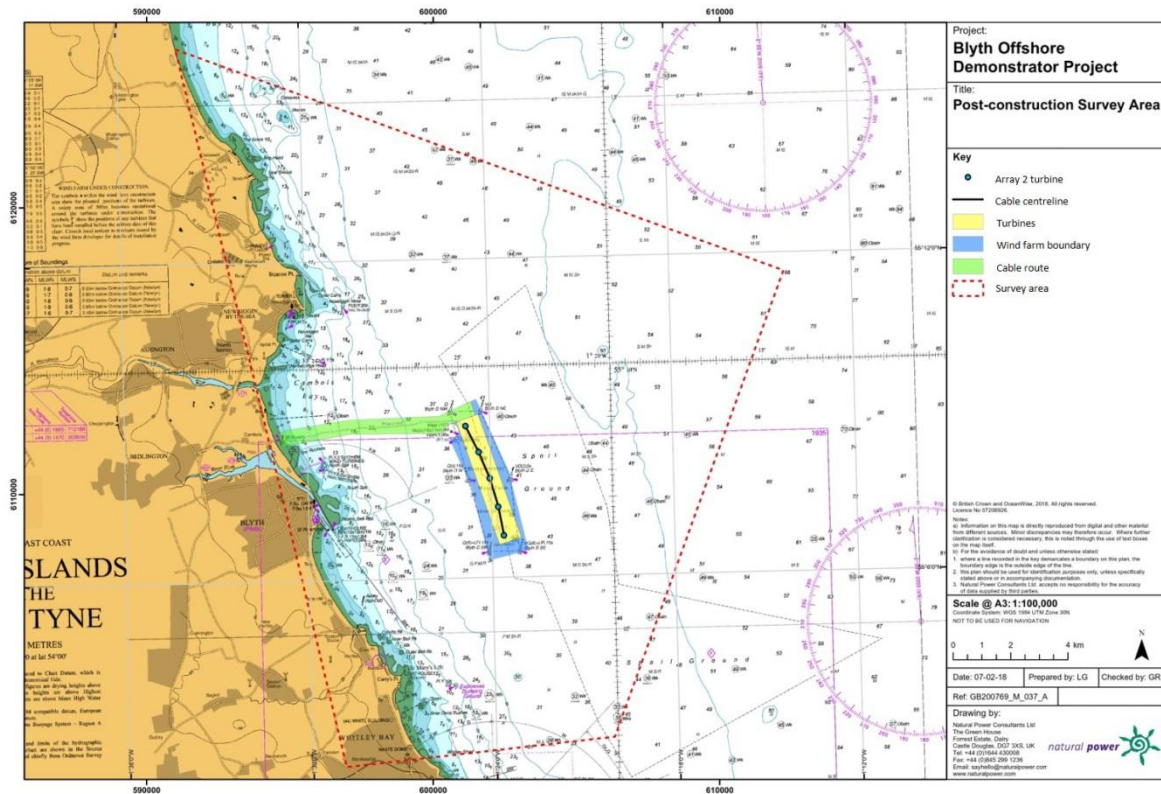


Fig 2

Longitude	Latitude
1°34.07'W	55°16.07'N
1°14.22'W	55°11.65'N
1°20.13'W	55°02.97'N
1°28.93'W	55°02.51'N
1°34.07'W	55°16.07'N

**Notice to Marine Users 2018  
Blyth Offshore Demonstrator Wind Farm**

**11<sup>th</sup> September 2018**

**Vessel Details**



<b><i>RV Princess Royal</i></b>	
Vessel Master	Neil Armstrong 01670 353793 07730 979784
MMSI	235089188
Vessel Call Sign	2EYM2
Company	Newcastle University
Project manager	Stuart McCallum: 07880 291116 email: <a href="mailto:stuartm@naturalpower.com">stuartm@naturalpower.com</a>
Office contact number	01661 312107



**Notice to Marine Users 2018  
Blyth Offshore Demonstrator Wind Farm**

**11<sup>th</sup> September 2018**

**EDF Renewables Contact**

EDF Renewables marine coordination based at Teesside:

Robert Palfreeman  
Access Control Technician  
[Robert.Palfreeman@edfenergy.com](mailto:Robert.Palfreeman@edfenergy.com)

EDF Renewables  
Teesside Windfarm Ltd  
Greenland Road  
PD Ports  
Hartlepool  
TS24 0RQ

Mob: +44 (0) 7384 437 125