



## **Notice to Marine Users 2019 Blyth Offshore Demonstrator Wind Farm**

**23<sup>rd</sup> May 2019**

### **Important Notice to All Marine Users**

#### **Post Construction Fish/Shellfish & Trawl Surveys**

Natural Power will be conducting an otter trawl survey at the Blyth Offshore Demonstrator wind farm. The survey is proposed to commence on 23<sup>rd</sup> May 2019 and will be completed by 30<sup>th</sup> May (duration 1 day). The survey time may vary due to weather conditions as a calm sea state is required, therefore if the weather is not suitable on 23<sup>th</sup> May the survey will be rescheduled. The vessel undertaking these surveys will be the 'Princess Royal'.

The purpose of the survey is to assess the diversity and distribution of the fish population in and around the turbine array.

Survey details:

#### **Otter Trawl Survey**

- Survey duration will be one day and consist of eight tows in total with duration of thirty minutes each at 3.5 knots. The trawl data will be collected across eight sampling stations.
- Fig 1 shows a chart of the survey area.
- Fig 2 displays a chart setting out the survey area (degrees and decimal minutes)

# Notice to Marine Users 2019

## Blyth Offshore Demonstrator Wind Farm

23<sup>rd</sup> May 2019

Fig 1

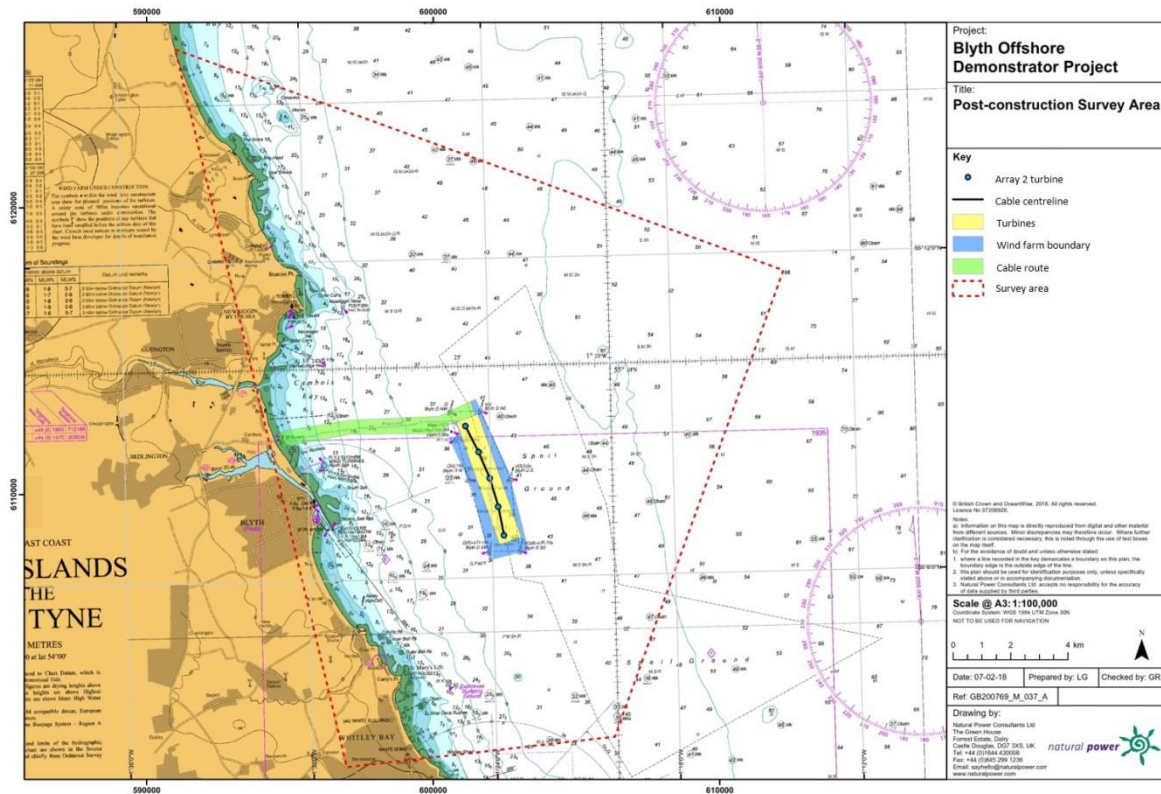


Fig 2

Longitude	Latitude
1°34.07'W	55°16.07'N
1°14.22'W	55°11.65'N
1°20.13'W	55°02.97'N
1°28.93'W	55°02.51'N
1°34.07'W	55°16.07'N

**Notice to Marine Users 2019**  
**Blyth Offshore Demonstrator Wind Farm**

**23<sup>rd</sup> May 2019**

**Vessel Details**



<b><i>RV Princess Royal</i></b>	
Vessel Master	Neil Armstrong 01670 353793 07730 979784
MMSI	235089188
Vessel Call Sign	2EYM2
Company	Newcastle University
Project manager	Stuart McCallum: 07880 291116 email: <a href="mailto:stuartm@naturalpower.com">stuartm@naturalpower.com</a>
Office contact number	01661 312107



**Notice to Marine Users 2019  
Blyth Offshore Demonstrator Wind Farm**

**23<sup>rd</sup> May 2019**

**EDF Renewables Contact**

EDF Renewables marine coordination based at Teesside:

Mark Crangle  
O&M Manager  
[Mark.Crangle@edf-re.uk](mailto:Mark.Crangle@edf-re.uk)

EDF Renewables  
Teesside Windfarm Ltd  
Greenland Road  
PD Ports  
Hartlepool  
TS24 0RQ

Mob: +44 (0) 7384 528 460

Kate Moretto  
Marine Access Coordinator  
[Kate.Moretto@edf-re.uk](mailto:Kate.Moretto@edf-re.uk)

EDF Renewables  
Teesside Windfarm Ltd  
Greenland Road  
PD Ports  
Hartlepool  
TS24 0RQ

Mob: +44 (0) 7875 113 418